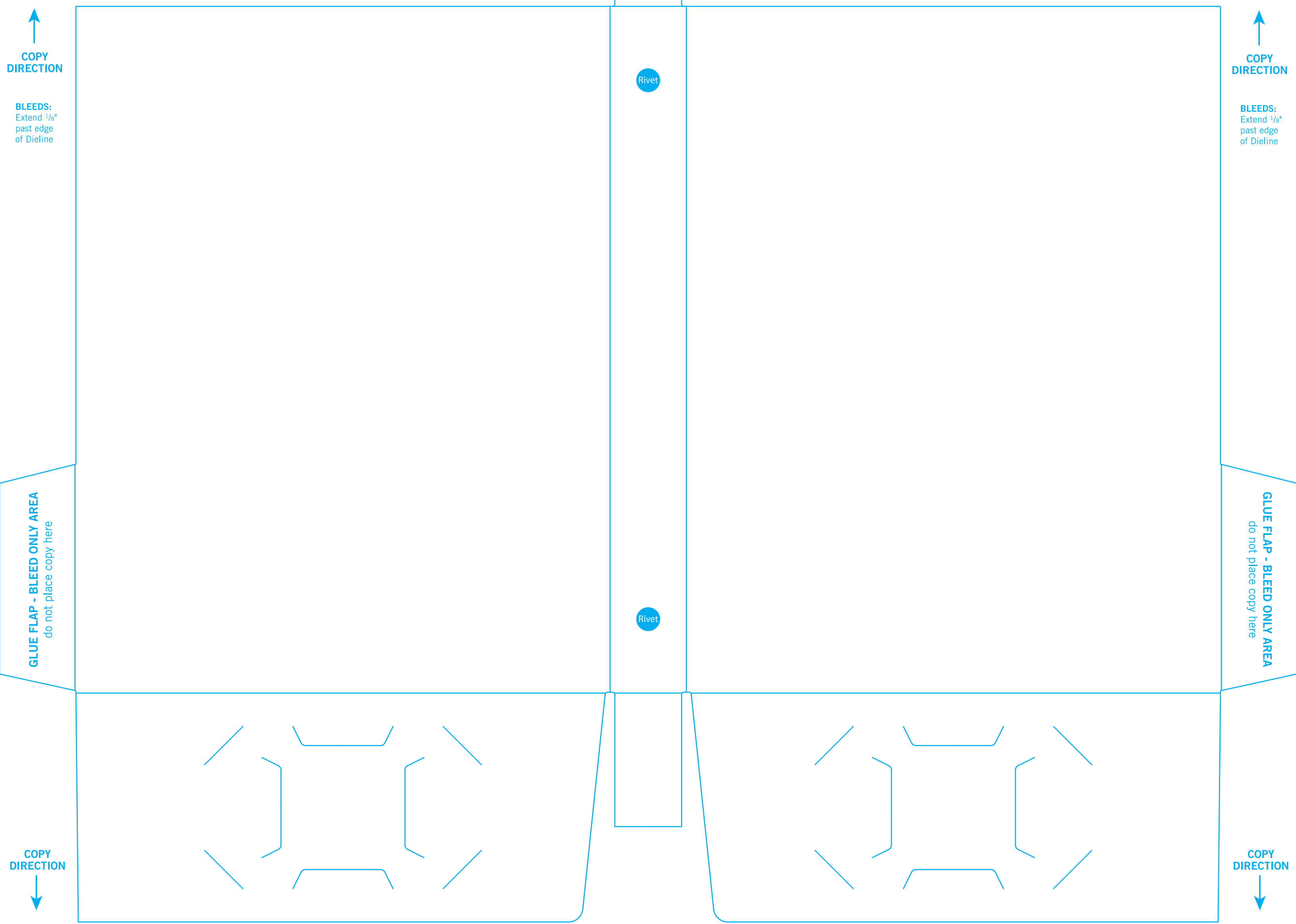


7" 1" 7"

# 88-61 Binder for 1/2" and 3/4" ring mechanisms

BACK COVER

FRONT COVER



COPY DIRECTION

BLEEDS:  
Extend 1/8"  
past edge  
of Dieline

COPY DIRECTION

BLEEDS:  
Extend 1/8"  
past edge  
of Dieline

GLUE FLAP - BLEED ONLY AREA  
do not place copy here

GLUE FLAP - BLEED ONLY AREA  
do not place copy here

COPY DIRECTION

COPY DIRECTION

9"

3"

Rivet

Rivet

RIGHT POCKET

LEFT POCKET

88-61

