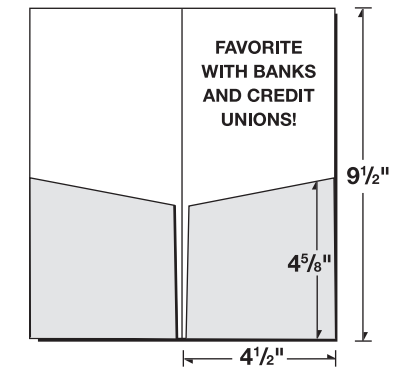
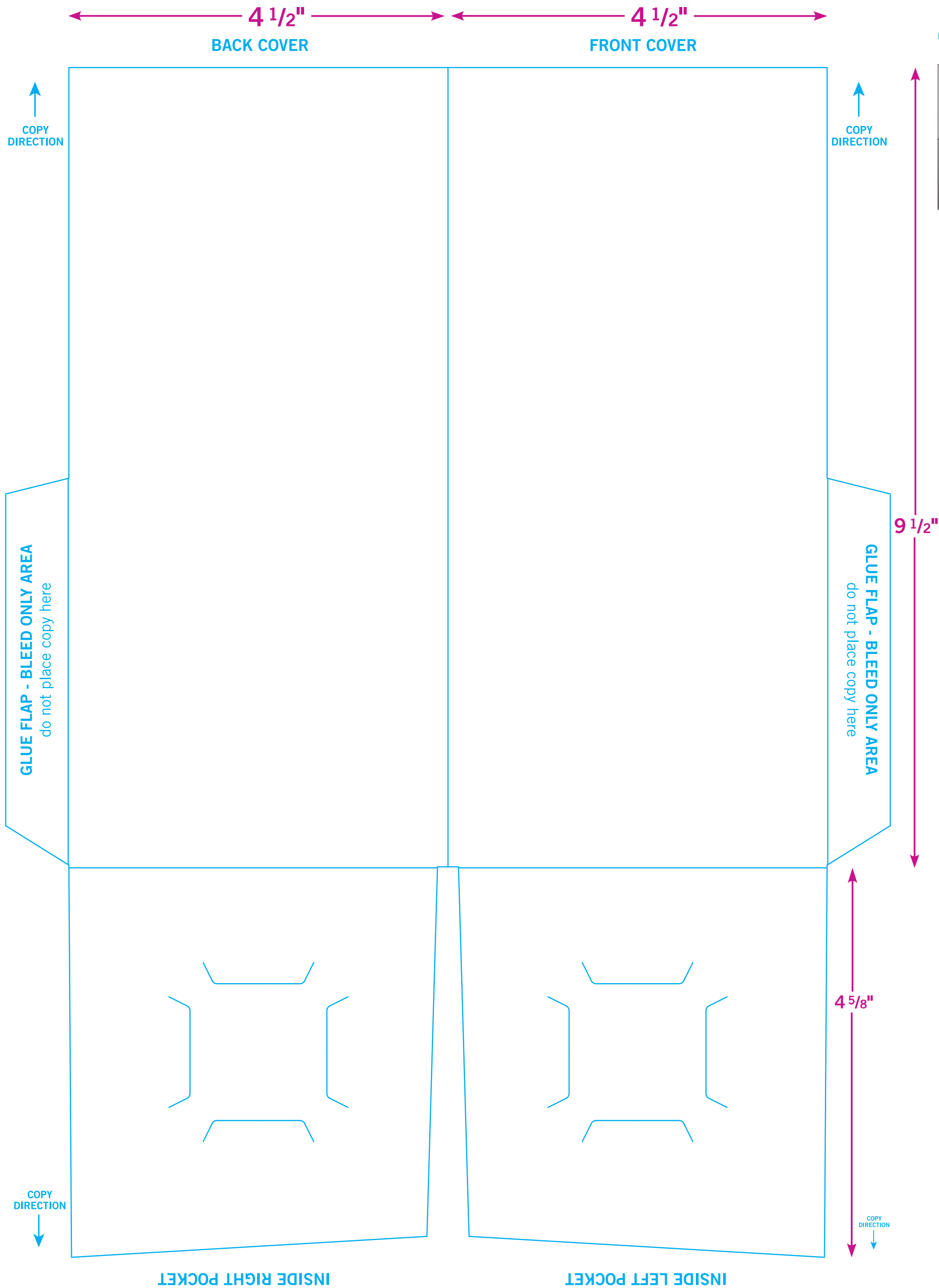


48-10



BLEEDS:
Extend 1/8"
past edge
of Dieline

COPY DIRECTION

COPY DIRECTION

GLUE FLAP - BLEED ONLY AREA
do not place copy here

GLUE FLAP - BLEED ONLY AREA
do not place copy here

COPY DIRECTION

COPY DIRECTION

INSIDE RIGHT POCKET

INSIDE LEFT POCKET

4 1/2"

4 1/2"

9 1/2"

4 5/8"