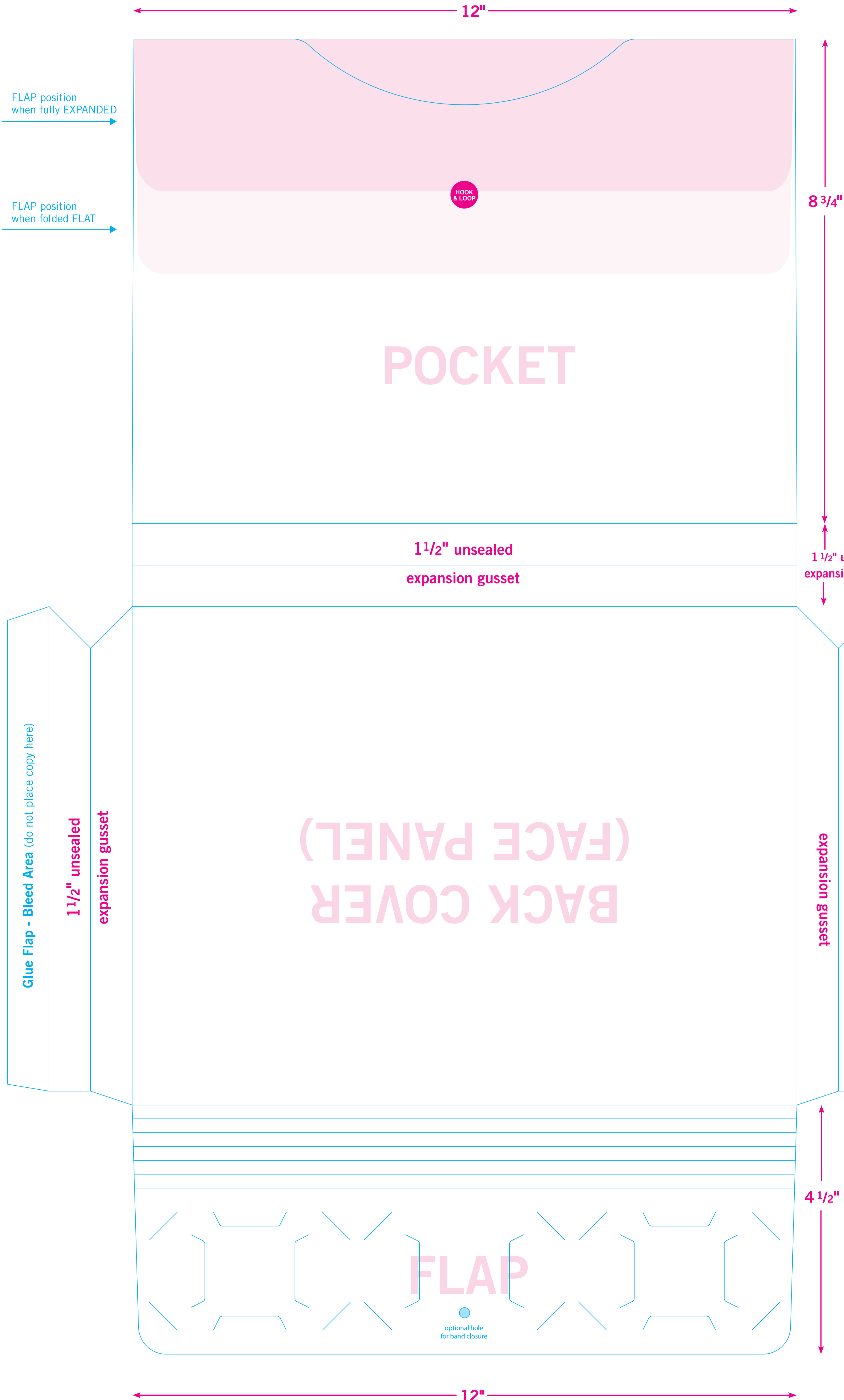
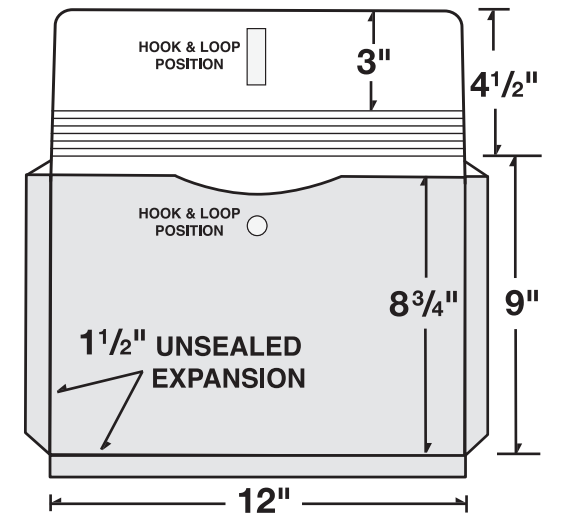


35-12



POCKET PANEL  
↑  
COPY DIRECTION

FACE PANEL  
↓  
COPY DIRECTION

FLAP PANEL  
↑  
COPY DIRECTION

Glue Flap - Bleed Area (do not place copy here)

1 1/2" unsealed expansion gusset

Glue Flap - Bleed Area (do not place copy here)

1 1/2" unsealed expansion gusset