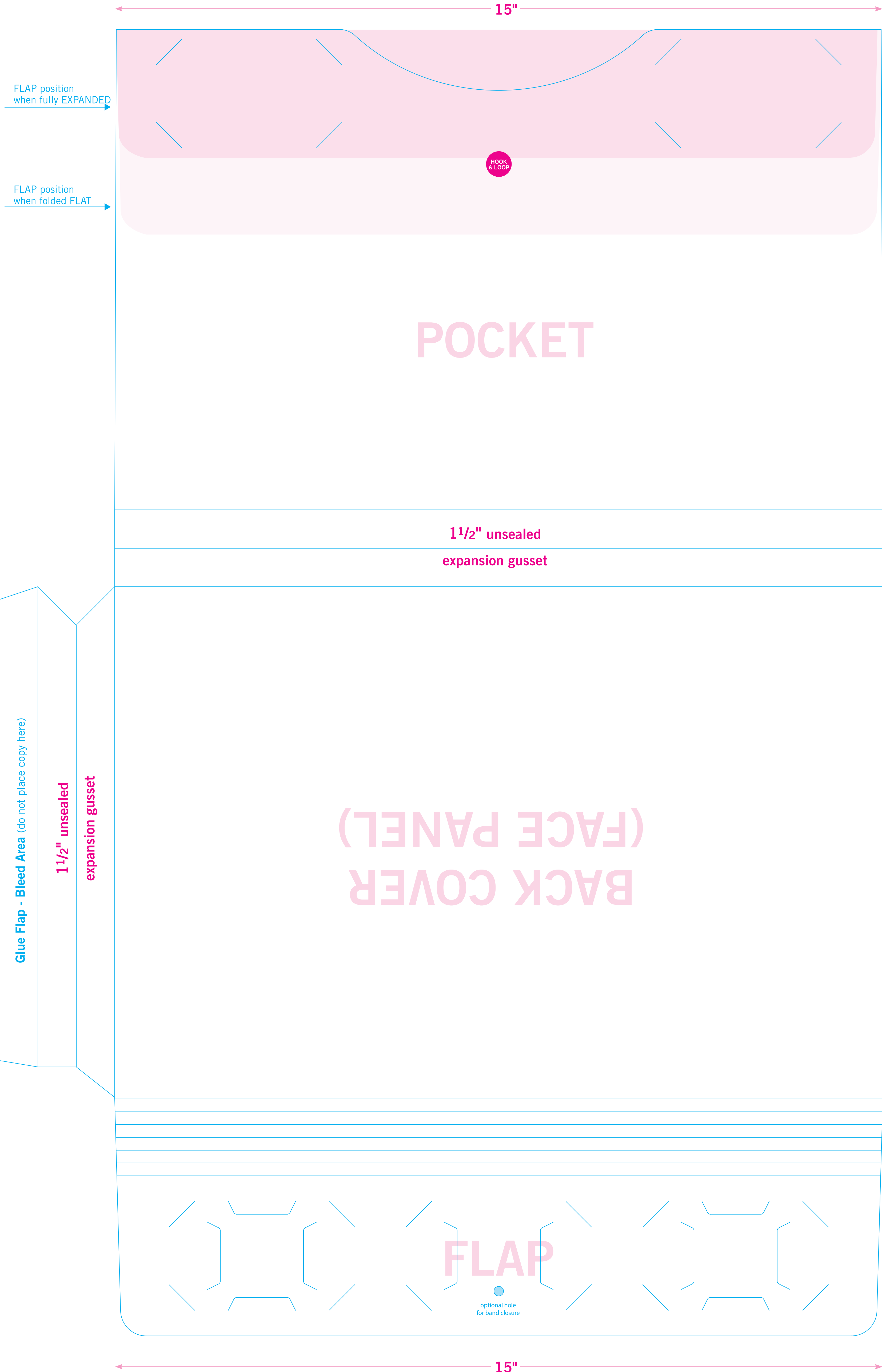
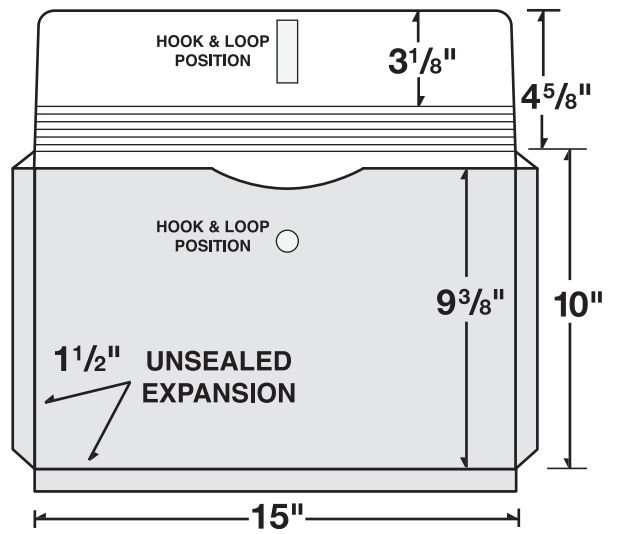


35-11



9 3/8"

POCKET PANEL  
↑  
COPY DIRECTION

10"

1 1/2" unsealed expansion gusset

4 5/8"

FLAP PANEL  
↑  
COPY DIRECTION

Glue Flap - Bleed Area (do not place copy here)

1 1/2" unsealed expansion gusset

Glue Flap - Bleed Area (do not place copy here)