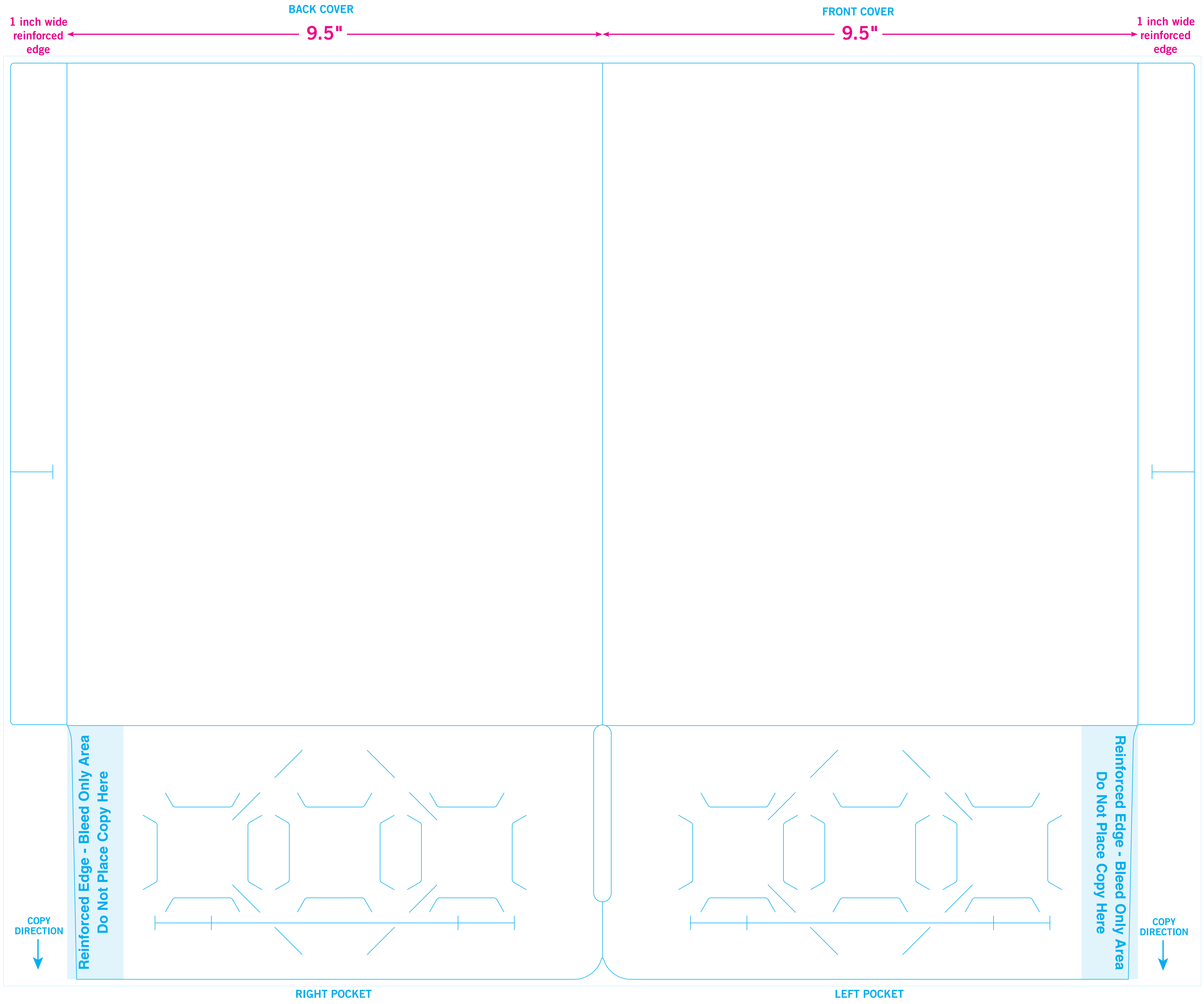
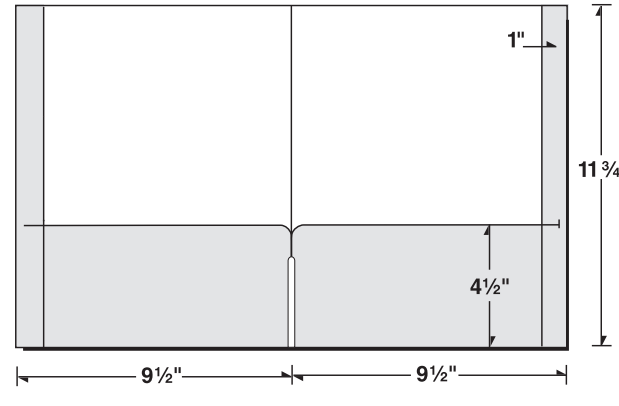


29-88



COPY DIRECTION

BLEEDS: Extend 1/8" past edge of Deline



COPY DIRECTION

11.75"

BLEEDS: Extend 1/8" past edge of Deline

COPY DIRECTION

Reinforced Edge - Bleed Only Area
Do Not Place Copy Here

COPY DIRECTION

Reinforced Edge - Bleed Only Area
Do Not Place Copy Here

4.5"

RIGHT POCKET

LEFT POCKET