

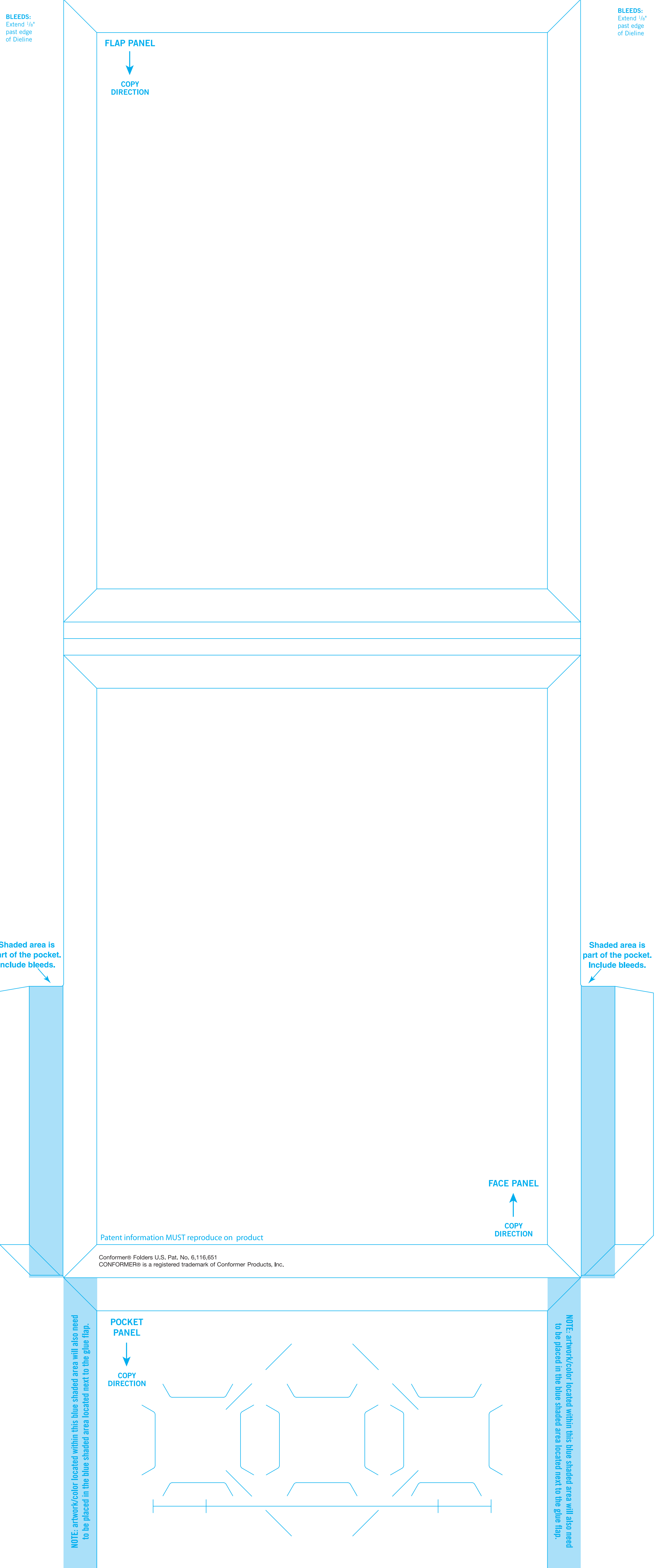
9 3/4"

11 3/4"

5/8"

11 3/4"

5 1/2"



BLEEDS:
Extend 1/8"
past edge
of Dieline

BLEEDS:
Extend 1/8"
past edge
of Dieline

FLAP PANEL
↓
COPY
DIRECTION

FACE PANEL
↑
COPY
DIRECTION

POCKET
PANEL
↓
COPY
DIRECTION

Shaded area is
part of the pocket.
Include bleeds.

Shaded area is
part of the pocket.
Include bleeds.

NOTE: artwork/color located within this blue shaded area will also need
to be placed in the blue shaded area located next to the glue flap.

NOTE: artwork/color located within this blue shaded area will also need
to be placed in the blue shaded area located next to the glue flap.

Patent information MUST reproduce on product
Conformer® Folders U.S. Pat. No. 6,116,651
CONFORMER® is a registered trademark of Conformer Products, Inc.

08-67-CON

