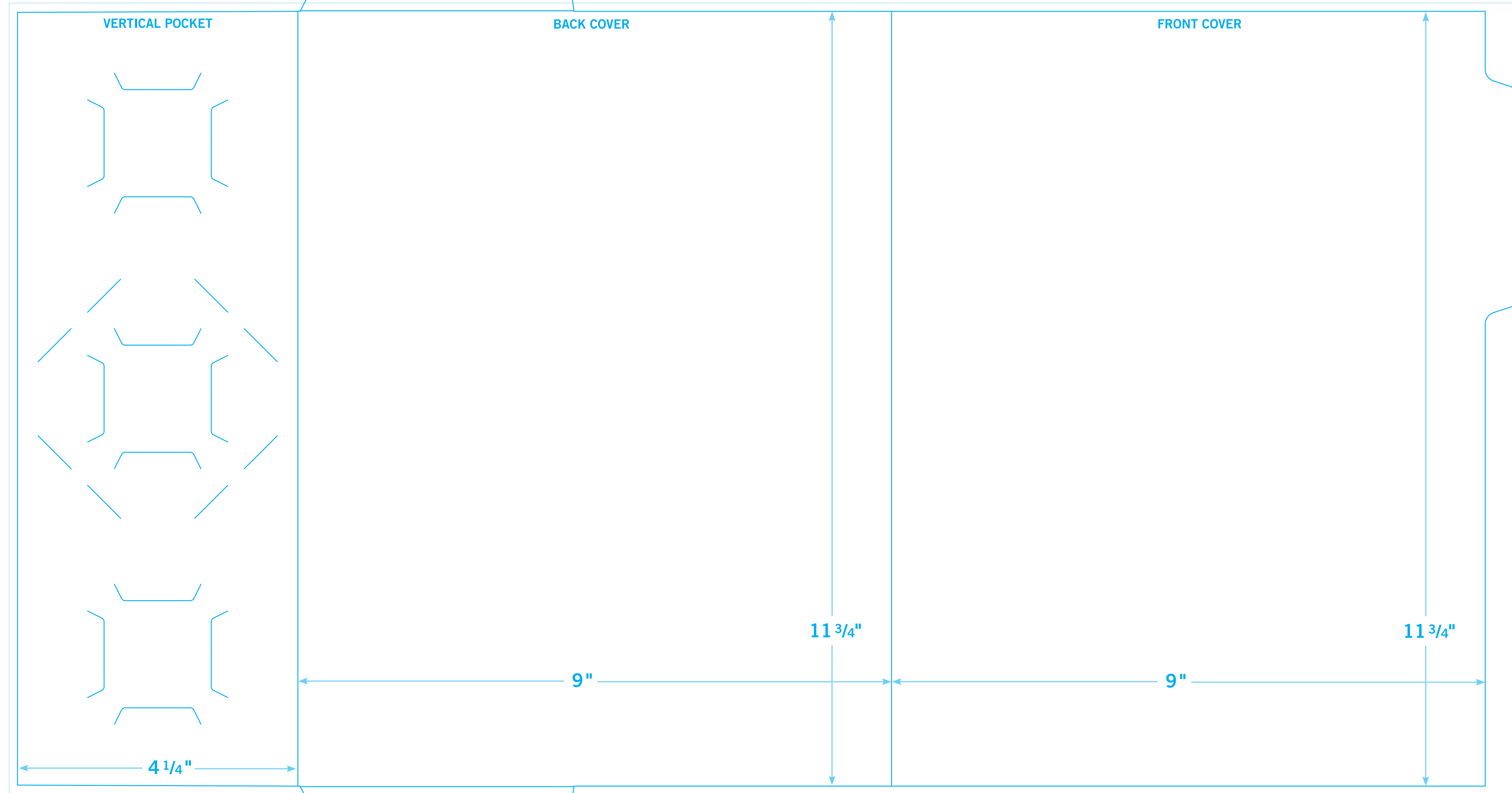


BLEEDS:
Extend 1/8"
past edge
of Dieline

GLUE FLAP - BLEED ONLY AREA
do not place copy here

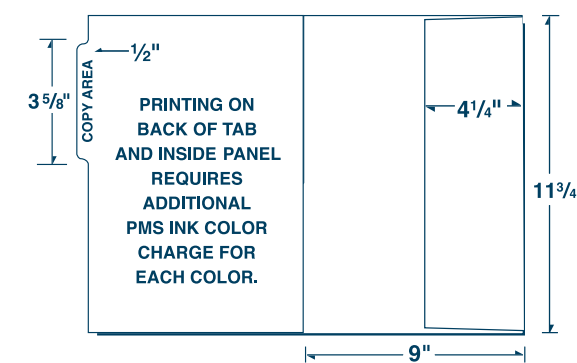
BLEEDS:
Extend 1/8"
past edge
of Dieline



BLEEDS:
Extend 1/8"
past edge
of Dieline

GLUE FLAP - BLEED ONLY AREA
do not place copy here

BLEEDS:
Extend 1/8"
past edge
of Dieline



SECOND SIDE OF PRINTED SHEET (RSP)

BLEEDS:
Extend 1/8"
past edge
of Dieline

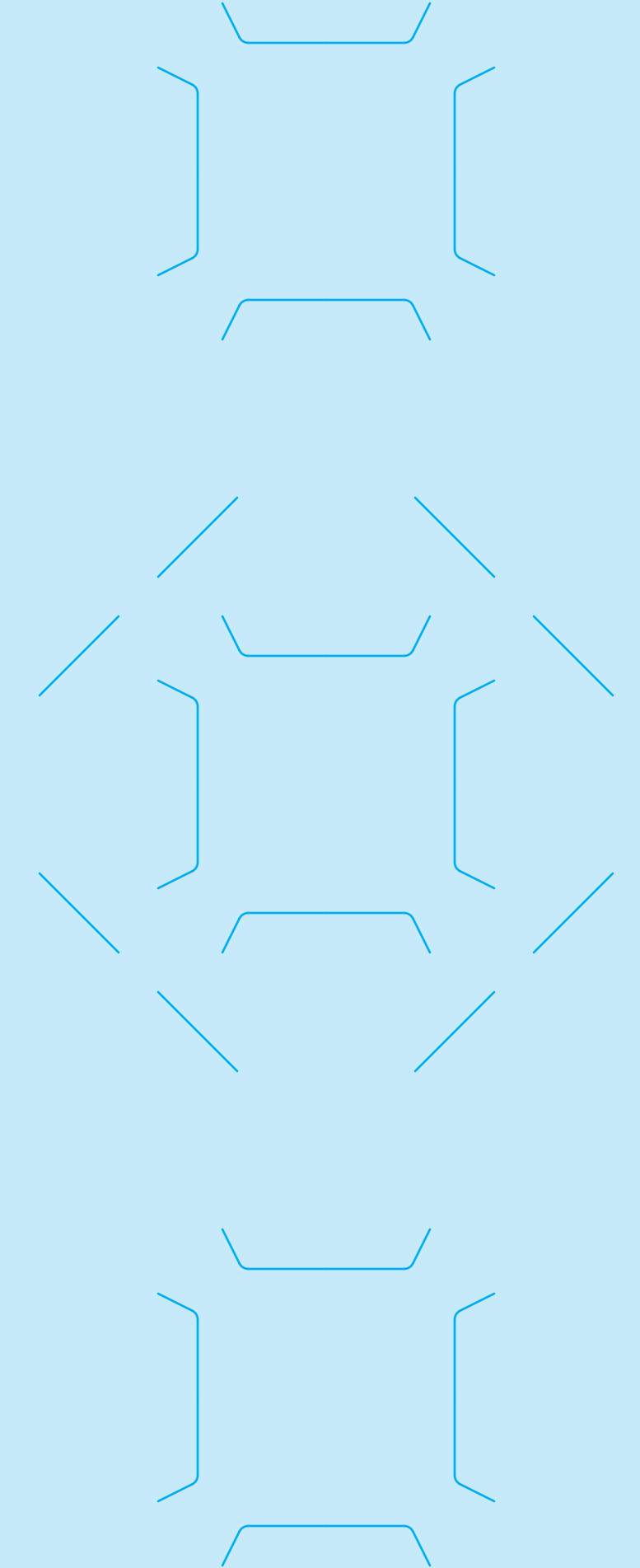
1/2" TAB

INSIDE FRONT COVER

INSIDE BACK COVER

**Printing on the Inside Panels
requires second side
print charges.**

**Blue shaded areas
will be covered
when folded
and glued.
Do not place
copy here.
Bleed only area.**



BLEEDS:
Extend 1/8"
past edge
of Dieline

BLEEDS:
Extend 1/8"
past edge
of Dieline