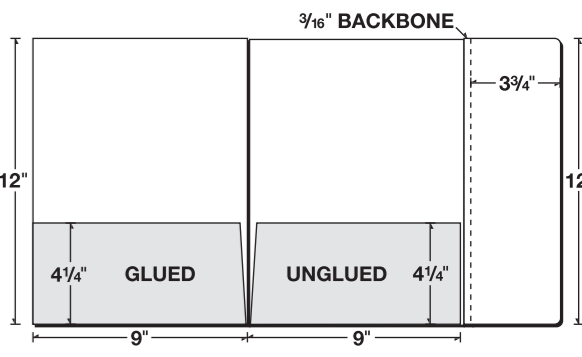
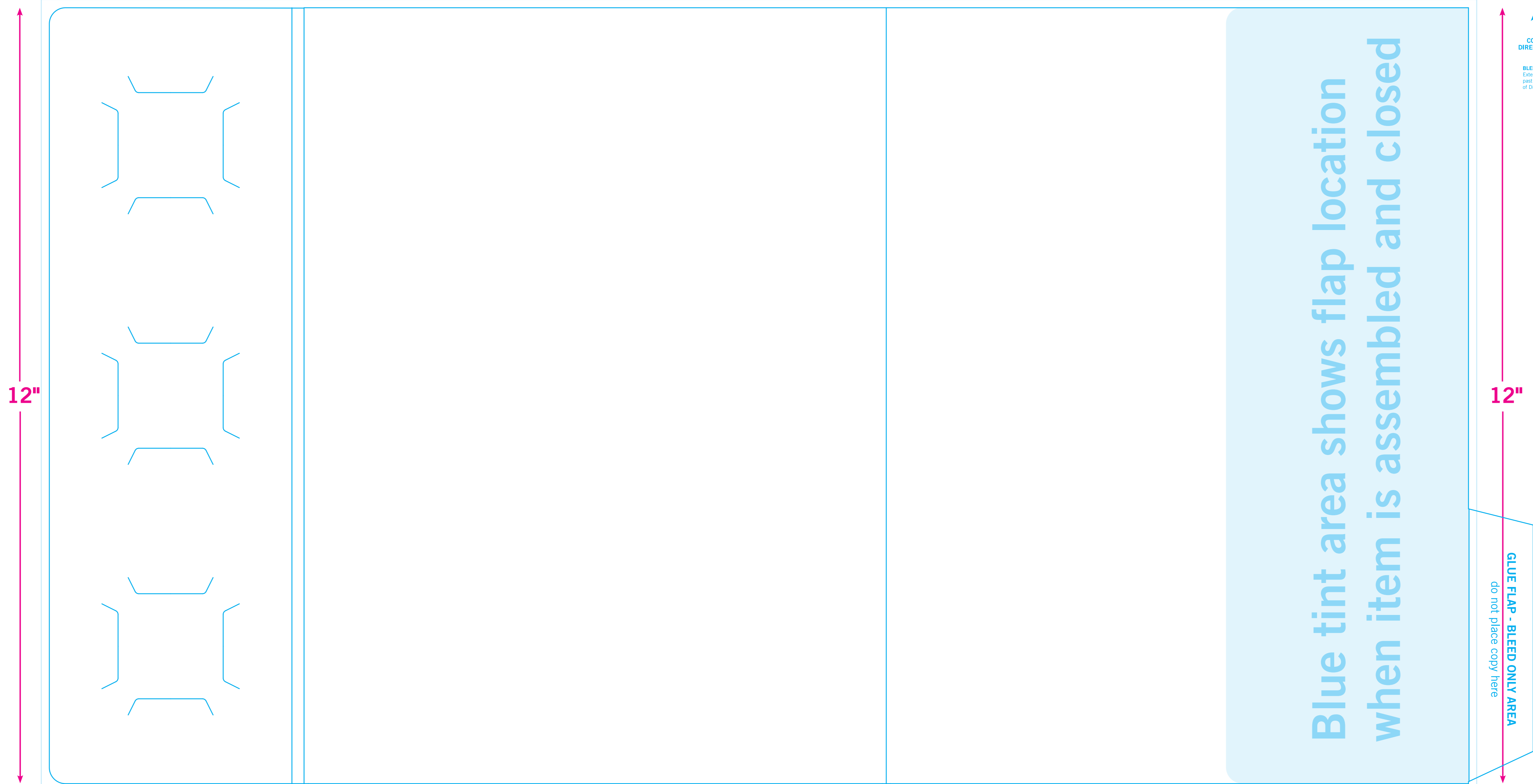


COPY DIRECTION
BLEEDS: Extend 1/8" past edge of Deline



Flap of this item can fold to inside or wrap to outside.

RIGHT PANEL 3 3/4" BACK COVER 9" FRONT COVER 9"



12"

12"

GLUE FLAP - BLEED ONLY AREA
do not place copy here

Blue tint area shows flap location when item is assembled and closed

4 1/4"

4 1/4"

BLEEDS: Extend 1/8" past edge of Deline

COPY DIRECTION

BLEEDS: Extend 1/8" past edge of Deline

COPY DIRECTION

UNGLUED RIGHT POCKET

GLUED LEFT POCKET