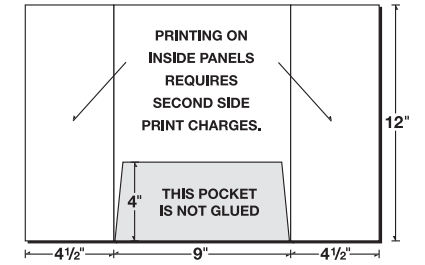
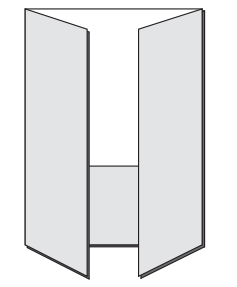
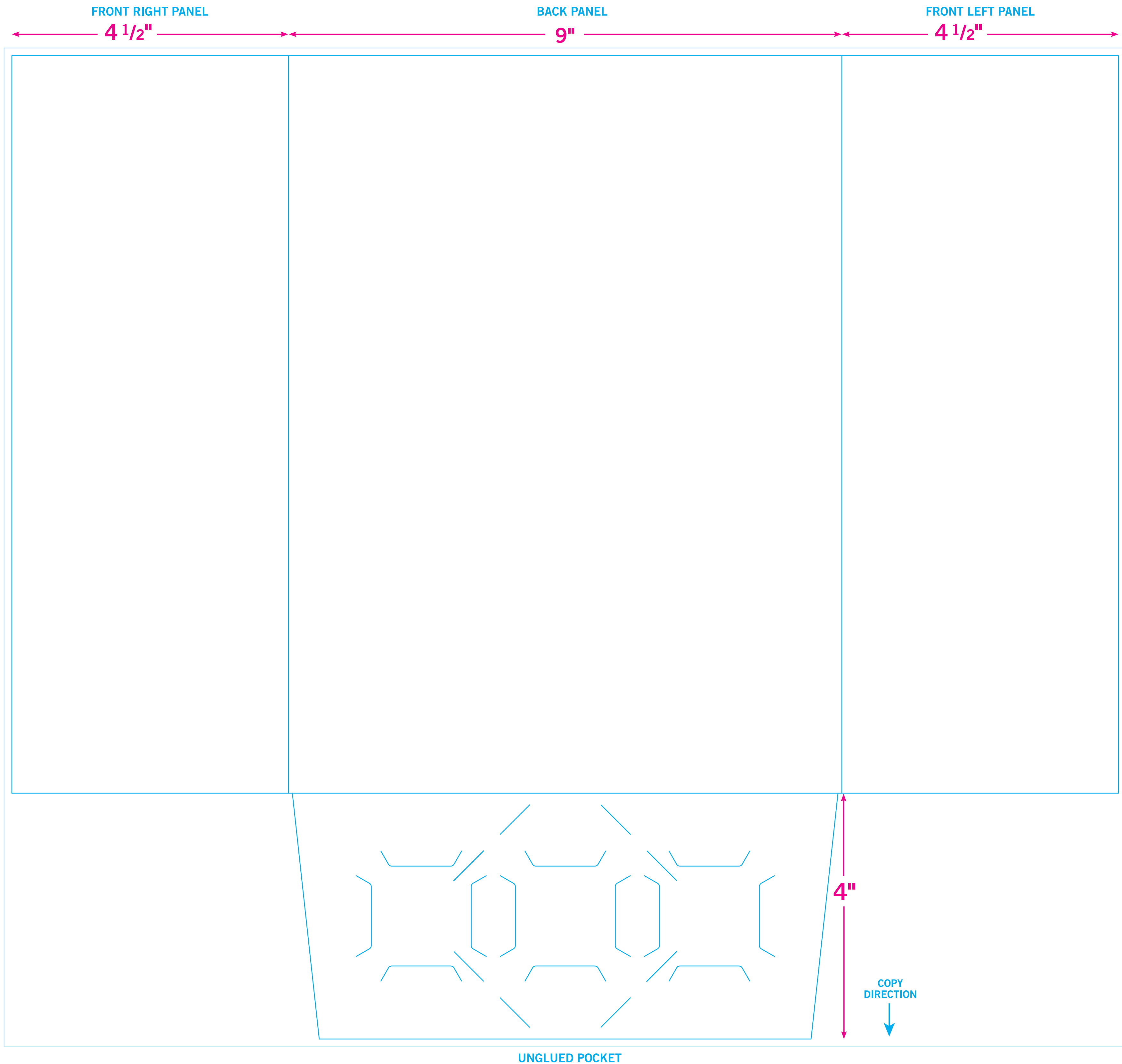


# FRONT SIDE OF PRINTED SHEET

08-07



COPY DIRECTION ↑

BLEEDS: Extend 1/8" past edge of Dieline

12"

COPY DIRECTION ↑

BLEEDS: Extend 1/8" past edge of Dieline

4"

COPY DIRECTION ↓

UNGLUED POCKET

# SECOND SIDE OF PRINTED SHEET

