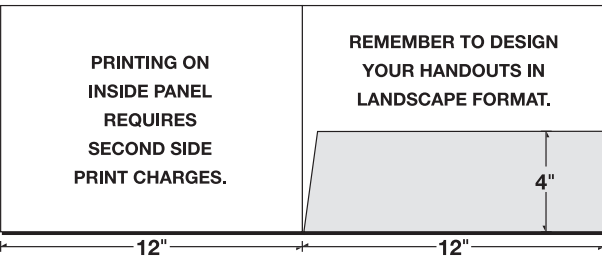
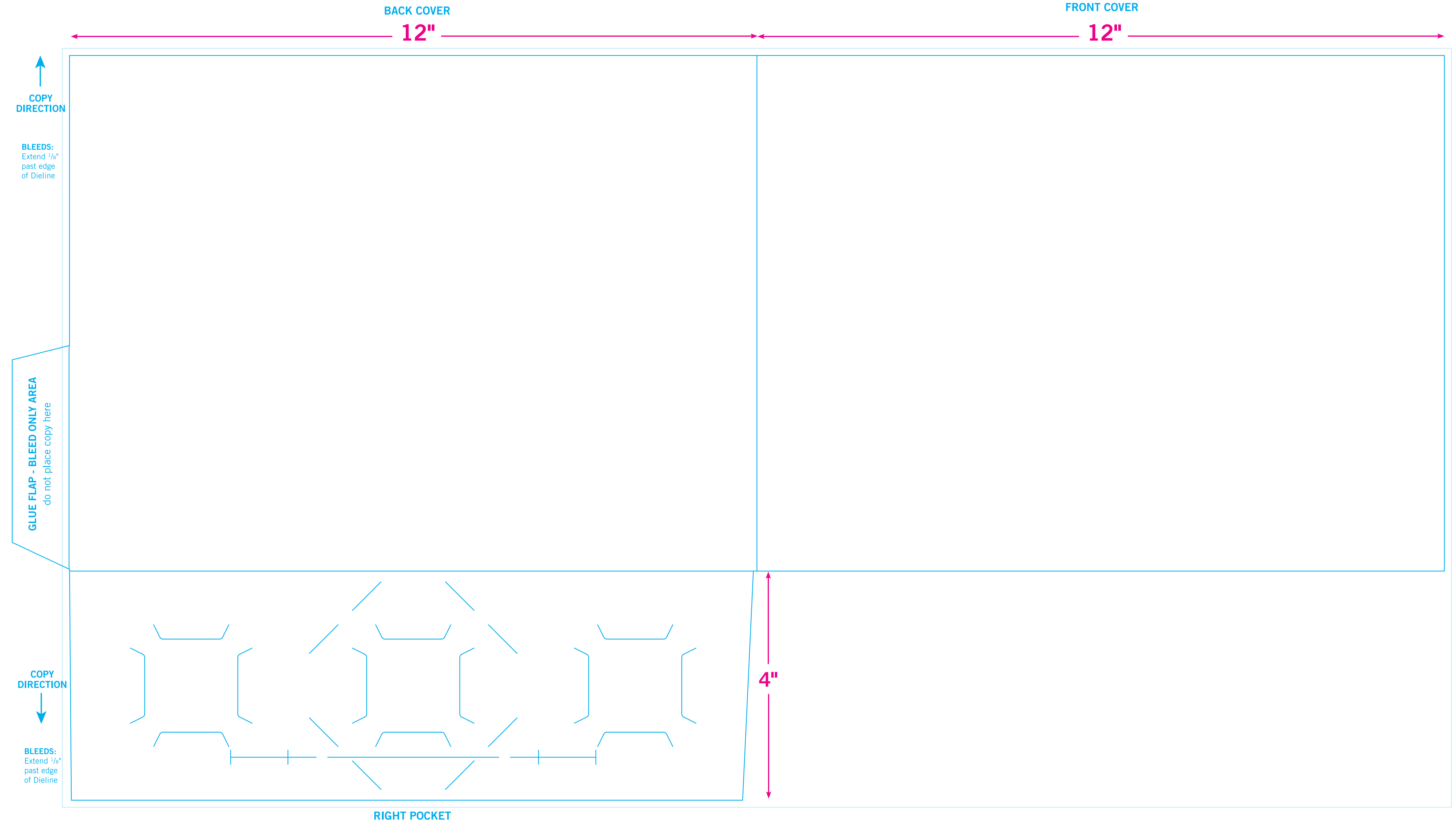


FIRST SIDE OF PRINTED SHEET

08-06



↑
COPY DIRECTION

BLEEDS:
Extend 1/8"
past edge
of Dieline

SECOND SIDE OF PRINTED SHEET

INSIDE FRONT COVER

INSIDE BACK COVER

↑
COPY
DIRECTION

↑
COPY
DIRECTION

BLEEDS:
Extend 1/8"
past edge
of Dieline

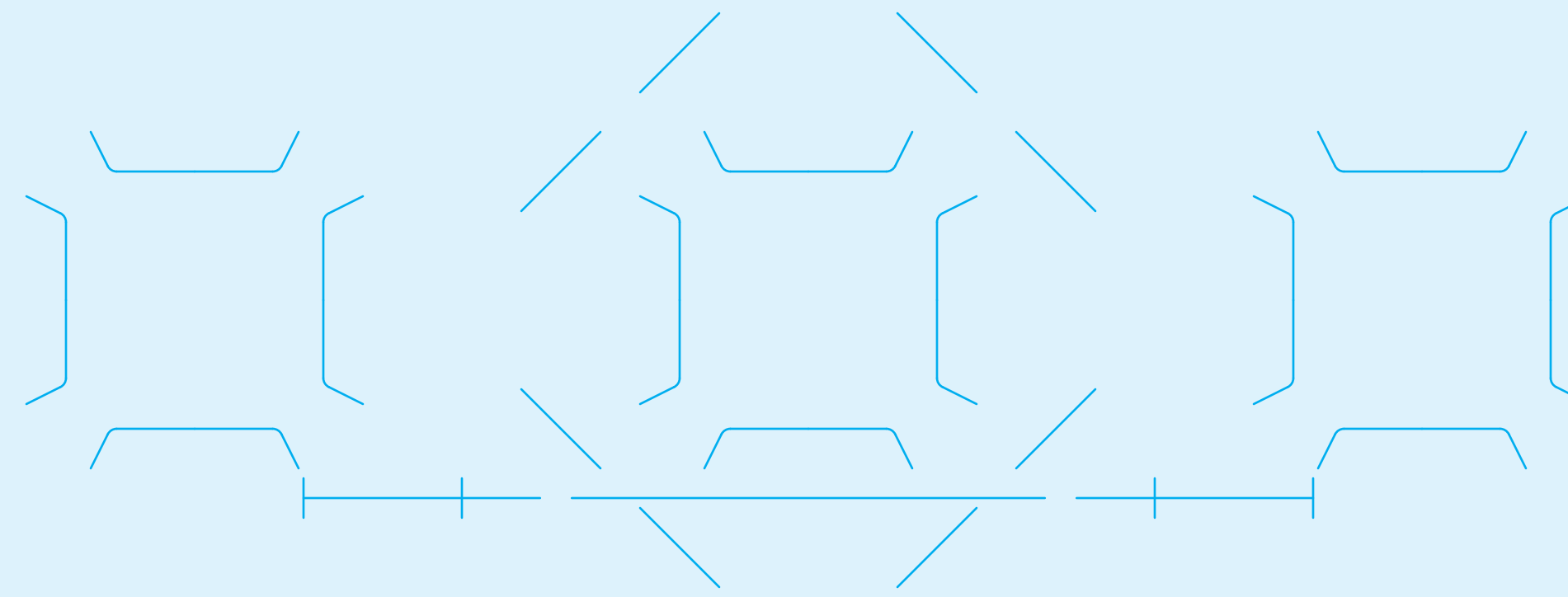
BLEEDS:
Extend 1/8"
past edge
of Dieline

**Printing on the Inside Panels
requires second side
print charges.**

**Printing on the Inside Panels
requires second side
print charges.**

**Blue shaded areas will
be covered when folded and glued.
Do not place copy here.**

Bleed only area.



BLEEDS:
Extend 1/8"
past edge
of Dieline